

# JustTouch

the #1 choice in pos



# JustTouchPOS

# JustTouchPOS

Retail



A well specified POS (Point of Sale) system will provide you with a professional business tool. It will ensure your takings are not only correct but secure. It will provide efficiency savings by automating and streamlining regular tasks to allow you and your business to become more profitable.

With a JustTouchPOS system in place you can rest assured that you have a fully featured and powerful management system to allow you to focus on what's important *"Keeping your customers satisfied, spending and returning."*



## SIMPLE TO OPERATE

- Easy colour-coded or graphic image buttons make product identification quick & easy for your operators
- Accept multiple payment types with options to integrate EFT credit card payments
- Full operator tracking with assignable permissions and protected with full manager override
- Fully automated with product choice pop-ups & order printing

## EFFECTIVE MANAGEMENT

- Full management reporting - X/Z Financial - Product Sales Operator Sales, Loyalty Reward & Redeem, Stock Value
- Simple stock control to value your inventory
- Employee time & attendance tracking



## COMPLETE PACKAGE

- Your JustTouch POS system will be programmed with **YOUR** products, prices & menus by our in-house team
- Your JustTouch POS system will be delivered and fully installed in your business by our own technicians
- You will receive **FULL** training on all operational, reporting and re-programming features to allow you to maintain your system

## AFTERCARE AND SUPPORT

- Your JustTouch POS system can be teamed with our Maintenance & Support Contract for total business continuity
- Dedicated phone and broadband support tools for remote technician diagnosis & repair
- Software updates for new JustTouch features



01903 87 37 73

[www.justtouch.co.uk](http://www.justtouch.co.uk)



# JustTouchPOS

Retail



Grocery - Bakery - General Store - Hardware  
Supermarket - Newsagents - Cash 'n' Carry - Fashion Store  
Footwear - Visitor Centre - Gift Shop

The flexibility, power and ease of use make the JustTouchPOS system not only a natural choice but a perfect match for any retail application.

Proven reliability & installed Worldwide from single to multi-POS and multi-site POS, we handle it all.

## ESSENTIAL FEATURES

- Fast operation with powerful in-built order processing logic
- Each product has 5x price levels and 10x individual sell sizes
- Barcode scanning for easy product selling
- Easy to learn & use means minimal operator training required
- Customer Loyalty scheme with definable Earn/Redeem rates
- Comprehensive automated Promo & Special Offer features
- Multiple operators per POS with full tracking of sales/voids etc.

## ESSENTIAL MANAGEMENT

- Have confidence in a system that has full tracking and operator authentication. Using state-of-the-art contactless operator wristbands all operator functions are tracked in real-time
- KPI (Key Performance Indicator) reports are instantly available

## EXPANDED FEATURES

- JustTouchBackOffice offers full product & inventory management features - purchase orders - stock takes - layways - stock on loan and inter-branch stock transfers
- Unique Fashion module allows for a full selling matrix with product lookup by Year - Season - Fashion Type - Fabric Style Base Colour - Item Colours - Size - Finishing - Cup-Size
- Integrated linked EFT credit card terminal saves "double-entry"
- Export any report to .xls (Microsoft Excel) file format for further analysis or importing to most major accounts packages

## MADE FOR PURPOSE

- JustTouch POS systems are based upon true-flat 15" colour TFT fan-free touchscreen hardware. Engineered for 24x7 use including industry IP55 liquid and dust rated protection and backed with a 3 year RTB manufacturers warranty.
- Contact us today for a no-obligation demonstration & quotation



### Financial Detailed Report

Cash Control JustTouch

193 Finzon Road Finzon Valley, Worthing, UK, BN14 6EP

Location:	Headstone	Generated By:	Support
Generated On:	14/06/2013 13:04:08	Criteria Date:	14/06/2013 00:00:00 - 15/06/2013 00:00:00
Criteria:	Cashier		

#### Transaction Statistics

Best Transaction:	14/06/2013 12:47:37	Total Transactions:	31	Cashiers:	2
Last Transaction:	14/06/2013 13:03:30	Total Transactions:	61	Total Transactions:	9
Net Sales:	60.00	Cancelled Orders:	0.00	Quantity Sold:	60.00
Returns:	0.00	Refunds:	0.00	Net Sales:	60.00

#### Terminal Breakdowns

Terminal Name	Qty Sold	Order	Net	Tax	Payments	Net Sales
JustTouchPOS01	40.00	236.65	236.35	25.30	232.65	45
Terminal Totals	40.00	236.65	236.35	25.30	232.65	45

#### Media Totals

Cash	IB	33.30 (Credit)	14.00	Accounts	10	70.00
Quantity	1.00	1.00	0.00	Items	100	1.00
Item Discounts	0.00	0.00	0.00	Change	0.00	0.00
Order Discounts	1.00	1.00	0.00	Total Payments <td>10</td> <td>220.65</td>	10	220.65
Supplier Charges:	0.00					

#### Master Group Summary

Group Name	Sales Cost	Sales Exc Tax	Sales Inc Tax	Sales Tax	Margin	Group %
Food	5.00	4.50	5.00	0.40	70.00%	100.00%
Grand Totals:	5.00	4.50	5.00	0.40	70.00%	100.00%

#### Clerk Sales

Claremont	5.00	100.00%
-----------	------	---------

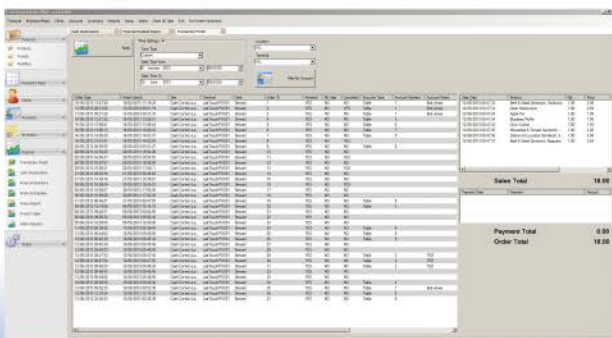
#### Account Totals

Account Changes:	0.00	Account Payments:	0.00	Account Difference:	0.00
Account Trans Out:	0.00	Account Trans In:	0.00		
Table Changes:	0.00	Table Payments:	0.00	Table Difference:	0.00
Table Trans Out:	0.00	Table Trans In:	0.00		

#### Media vs Sales

	Excluding Tax	Including Tax	
Media Sales Inc	191.35	Media Sales Inc	232.65
Report Sales Inc	4.50	Report Sales Inc	230.15
Variance	187.77	Variance	232.65

JustTouch Back Office - v1.0.0.280



01903 87 37 73 [www.justtouch.co.uk](http://www.justtouch.co.uk)